

Note

1. Do not fix the device to any surface which is a heat source to avoid over heating
2. Do not cover the surface or ventilation grills of the device to avoid over heating

1. Verify the package contents

Please verify the package contents against the List Below

- | | | | |
|-----------------------|----|-------------------|----|
| 1. G88 Controller | x1 | 4. Serial Cable | x1 |
| 2. Power Cable | x1 | 5. Network Cable | x1 |
| 3. Quick Start Manual | x1 | 6. Remote Control | x1 |

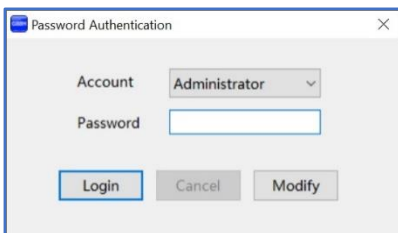
2. Set up the G88

- I. Connect the power cable to the unit and power it up
- II. Connect the outputs to the screens of the video wall
- III. Connect all the video sources to the inputs of the devices

Note: G88 remembers the settings used on the device before powering off. The default setting for the new unit is **2x4** video wall with **input 1** across the 8 screens. All outputs are set at resolution of 1920 x 1080@60.

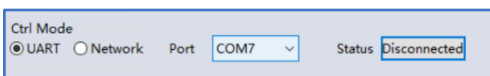
3. Run the software on control PC

Users can run the G88H.exe software directly without installation. Software can be downloaded from SEADA website (<https://seada.co.uk/downloads>). Double click the G88H software to get the Dialog box as below



Default password for Administrator: 111111
 Default password for User: 000000
 Type in the password and log in

4. Connect through Serial Port



Connect the G88 with a serial cable to the control PC (cable included in the package)

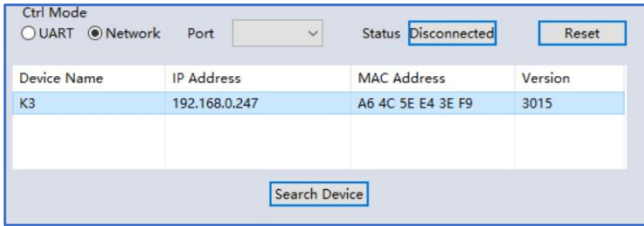
If the software was connected via UART (RS232) last time, software will connect to the G88 automatically via RS232. If it was used at Network last time, a 'Network Timeout' error message will be shown on screen and users need to set up as below for RS232 connection in the software

- Choose '**UART**' instead of '**Network**'
- Select the **COM port** from the **Port** dropdown menu
- Press '**Disconnected**' button to connect

5. Connect through Network

The default IP address for G88 controller is **192.168.0.247**, Users need to change the IP address of the control PC to **static** IP address and the same network segment as the G88 at **TCP/IPv4** in **Ethernet Properties**

- IP address: any address between **192.168.0.2** and **192.168.0.254** except the address which has been taken by the G88
- Subnet mask: **255.255.255.0**, Default Gateway: **192.168.0.1**



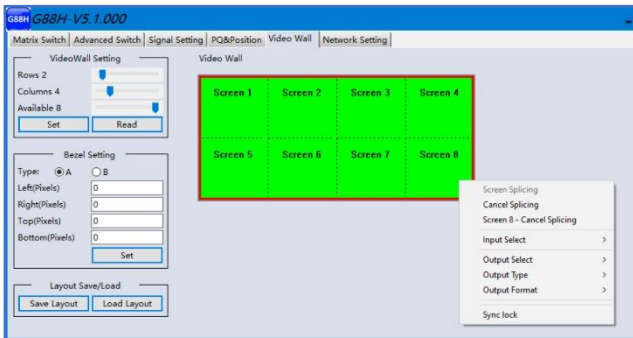
Connect the G88 with a CAT cable to the control PC (cable included in the package)

If the software was connected via Network last time, software will connect to the G88 automatically via network. If it was used at serial port last time, a 'Please select COM port' error message will be shown on screen

and users need to set up as below for Network connection in the software

- Choose 'Network' instead of 'UART'
- Press 'Search Device' button to find the G88 on the network
- Highlight the device and press 'Disconnected' button to connect

6. Set up the video wall



Once connected, G88 will load the settings used from last time. The default setting for the new unit out of package is 2x4 video wall with input 1 across the 8 screens. All outputs are set at resolution of 1920 x 1080@60.

Select the 'Video Wall' tab and users can set up the video wall layout in 'VideoWall Setting', Bezel correction in 'Bezel Setting' and Save/Load preset video wall layouts in 'Layout Save/Load'

Right click on the video wall, users can use the tools in

'Dropdown menu' to set up the video walls.



- **Screen Splicing** - This combines the selected screens into one and displays the selected input across all the splicing screens. For example, in the setup 2x4 at left, if all of them are spliced, then the input selected by the user will be displayed across all the 8 screens.

(Users can create more than one video wall on G88. e.g. they can create two 2x2 video walls instead of one 2x4 video wall or 3, 4 independent video walls)

- **Cancel Splicing** – This will cancel the video wall and revert to the matrix switching mode
- **Screen – Cancel Splicing**– This will cancel the very screen and revert only that screen to the matrix switching mode to form a Picture in Picture effect
- **Input Select** –This allows the user to control which input is displayed on video wall
- **Output Select** – The user can control which screen should be mapped to which output (only available in matrix mode)

- **Output Type** – Allows the user to adjust the type of the output (only available in matrix mode)
- **Output Format** – Controls the resolution of the output (only available in matrix mode)
- **Sync lock**– to form sync between different screens in the same video wall

This quick start manual provides basic instructions for setting up SEADA G88 video wall controllers. For additional information about how to use the controllers, please refer to the G88 User Guide (SD-EN-015), which can be downloaded from the SEADA website (<https://seada.co.uk/downloads>).